

# CONNECTIONS

SUMMER 2016

## **Bridging Care and Comfort**

Transitional Care Unit  
slated for October opening

## **Northeast Neighborhood Socials**

Pilot program honored for its  
community contributions

## **In Good Hands and in Good Company**

Adult Day brings quality of life  
to caregiver and care receiver

## **Save the Date!**

14th Annual Fall Luncheon  
Coming September 22



**Catholic Eldercare**  
Nurturing Life's Ageless Spirit

Dear Friends:

Each one of us is on a continuing journey of discovery as we grow in our understanding of ourselves and of the world around us. For over thirty years, Catholic Eldercare has served as a guiding light for many journeys, helping seniors discover how to live fully, as independently as possible and with dignity.

It is with tremendous gratitude that we share with you the journey of your gifts—and our stewardship of them—in our 2015 annual report. We hope that this information inspires your continued support and involvement to improve the quality of care for those we serve.

In this issue of *Connections*, you'll learn that there's never been a more exciting time for Catholic Eldercare. We continue to build momentum to better serve the needs of our older adults and their families, adding transitional care to our full continuum of choices, the bridge to security and comfort.

You'll read about a powerful group of community leaders who rallied together in common purpose, earning Catholic Eldercare the Community Impact Award for our "Northeast Neighborhood Socials" pilot.

We share the ways in which you can make a difference and help us fulfill our true promise as a community resource. Our new website, [www.catholiceldercare.org](http://www.catholiceldercare.org), makes it easier than ever to lend your generous support.

Whether coordinating the care of the people we serve, accompanying a loved one for an appointment or supporting Catholic Eldercare with personal philanthropy, we are all caregivers in one way or another.

Thank you for being on this journey with us.

Sincerely,



*Suzanne Snyder*

Suzanne Snyder  
Chair, Board of Directors



*Dan Johnson*

Dan Johnson  
President and Chief Executive Officer

P.S. If you have a FACEBOOK account, we encourage you to 'Like' Catholic Eldercare. So much happens between the spring and fall newsletters, FACEBOOK is a great way to stay informed about the engaging activities and programs residents enjoy.



## In this issue:



### Transitional Care Begins October 2016

The October opening of the transitional care and Adult Day addition marks a major milestone in the continuum of care.

Page 4



### Community Impact Award

LeadingAge Minnesota recognized Catholic Eldercare for community-based programming, Northeast Neighborhood Socials, at its Institute and Expo in February.

Page 6



### Where Everybody Knows Your Name

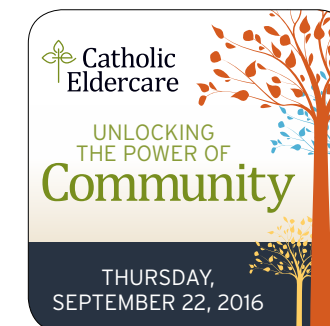
Get inspired by the stories of transformation that have shaped the Adult Day program into a place of hope, dignity and purpose.

Page 8

## Mark Your Calendar!

### Unlocking the Power of Community

The 14th annual Luncheon fundraising event will be held September 22, 2016 at the Earle Brown Heritage Center in Brooklyn Center.



#### President and CEO:

Dan Johnson

#### Director of Advancement:

Kristine Smyth

#### Information Specialist:

Angela Ali

#### Writer/Editor/Graphic Design:

imagewerks MARKETING

#### Catholic Eldercare

817 Main St. NE  
Minneapolis, MN 55413  
Phone: 612-379-1370  
Fax: 612-362-2486

Connections is a biannual publication of Catholic Eldercare, Inc., 817 Main St. NE, Minneapolis, MN 55413. The purpose of this publication is to provide useful information and resources to the Catholic Eldercare community. For more information on the publication or to request additional copies, suggest article ideas, or to be removed from the mailing list, contact Angela Ali at [aali@catholiceldercare.org](mailto:aali@catholiceldercare.org) or call 612-362-2430.

If you no longer wish to receive Connections, you may call 612-362-2430 or email Angela Ali at [aali@catholiceldercare.org](mailto:aali@catholiceldercare.org). Doing so will not affect your ability to receive services from Catholic Eldercare. You may notify us at any time should you wish to resume receiving Connections.

Equal Opportunity Employer

Nurturing Life's Ageless Spirit



# Quality transitional care is coming to NE Minneapolis!



"With the new Transitional Care Unit, Catholic Eldercare will continue to expand its mission and the way it has served the community for the past 30 years..."

- CEO Dan Johnson



Catholic Eldercare will expand its' continuum of care this fall when we open our Transitional Care Unit (TCU) to serve not only Northeast patients and families, but the wider Twin Cities area.



It will provide ideal transitional care for those recovering from illness, injury or surgical procedures.

"With the new Transitional Care Unit, Catholic Eldercare will continue to expand its mission and the way it has served the community for the past 30 years, especially its oldest

members: parents and grandparents, neighbors, members of our parishes and churches, and those who've worked a lifetime for area businesses," said CEO Dan Johnson. "They raised families, paid their bills and made our community the wonderful place it is today. Now is it they who need support as they face the challenges of aging and the TCU will greatly aid in that process."

The dedicated Northeast healing center will offer 24 private and amenity-rich rooms with access to leading-edge therapies, equipment and specialists in a comfortable, high-quality care environment.

"After years of creating senior living spaces including independent living and assisted living residents, the TCU will be a wonderful addition to the culture and mission of Catholic Eldercare," added Medical Director Dr. John Mielke. "With the new TCU, we look forward to helping restore people to health in their preferred living environment and avoiding re-hospitalization."



The TCU facility will open in October 2016 at 149 8th Avenue NE.

# Catholic Eldercare receives Community Impact Award for its Northeast Neighborhood Socials and Story Circles

During LeadingAge Minnesota's annual Senior Housing Conference this past February, Catholic Eldercare was honored with the 2016 Community Impact Award for the 4-week pilot program Northeast Neighborhood Socials, which utilized Story Circles as a way to reduce social isolation—a leading risk factor for seniors in a myriad of physical and mental health issues. The Community Impact Award serves to recognize an organization in the older adult services field for its impact of service and support to the

community beyond its traditional healthcare role. Dan Johnson accepted the award on behalf of the entire organization at the LeadingAge Minnesota Institute, the state's largest and most comprehensive aging services conference.

The Northeast Neighborhood Social pilot program consisted of four weekly group meetings in which Story Circles were held with the assistance of a skilled facilitator from the University of Minnesota. Residents were invited to come enjoy coffee, treats and conversation with lead-in questions like "How did you come to Northeast Minneapolis?" "What was a



Dan Johnson, Kristine Smyth and Diane Lucas at LeadingAge Minnesota's Senior Housing Conference.

particularly memorable holiday you enjoyed?" and "Was there a memorable friendship you've made over the years?"

When the pilot concluded, a toolkit was produced that included materials on the impact of social isolation and how to develop and implement Story Circles, later distributed to several area communities and Twin Cities Greater United Way, Catholic Charities and Hennepin County's Community Health Improvement Partnership, to name just a few.

"The Story Circle is a good example of using a community engagement process to identify a gap and harness community champions to try a new strategy to meet a need," said Dawn Simonson, Executive Director, Metropolitan Area Agency on Aging.

"Dan Johnson's authentic commitment to the health of the broader community residing beyond the walls of Catholic Eldercare is an asset to all who value age friendly communities."

The initial work flowed out of a community-wide collaboration which has now expanded to include the University of Minnesota and Patient Centered Outcomes Research Institute to continue projects contributing toward making Northeast Minneapolis a community for a lifetime, for all ages—but especially for elders.

"Through Northeast Neighborhood Socials, Dan Johnson and Catholic Eldercare have made a breakthrough contribution to Northeast Minneapolis' older adults," said Mary Broderick, RN, PhD and former President/CEO of Catholic Eldercare. "We are a richer community for being able to engage and learn from our older members as well as being better prepared for supporting many more of us in the aging process."



Dan Johnson had a live interview on FOX/KMSP-TV for the LeadingAge Minnesota Community Impact Award.

Visit the LeadingAge Minnesota YouTube Channel for a two-minute video featuring the Catholic Eldercare team and the Community Impact award at [www.youtube.com/user/AgingServicesMN](http://www.youtube.com/user/AgingServicesMN).



# A Place Where Everybody Knows Your Name

Think about a time when you unexpectedly ran into a friend or acquaintance. Maybe it took place at your local church or grocery store, or perhaps it was somewhere far from home, completely taking you by surprise. Near or far, your friend's reaction was likely met with the same enthusiasm: they smiled and waved at you, eager to receive a hug or a handshake.

Now imagine that same scenario but playing out on a much greater scale. Catholic Eldercare by Day is the familiar face that excitedly greets you with open arms, day in and day out. The program provides services that engage the whole person by focusing on the mind, body and spirit. It is the home away from home. Get inspired by the stories that have shaped the Adult Day Program into a place of hope, dignity and purpose, as told by Program Director Joyce McIntosh.

Mary regularly came to the program for over three years and knew every single person, including staff and members. It wasn't just limited to their names; she knew their stories, their families, the things that made them tick.

"We used to joke that she ran the place—she knew what needed to be done around here and kept everyone in line!" Joyce laughs. Mary's health steadily declined over the years until she was finally admitted into hospice care. Her son and daughter-in-law planned on caring for her at home, but the longing to be with her friends was too much. Despite her ailing state, her dogged determination landed her back at the Adult Day Program. "She routinely came back until the week before she passed. The social piece was extremely important to her," Joyce says.

The social piece was also what caused a ripple effect for the marriage of a couple—for the better. A couple who was previously isolated in their own home because of the husband's care needs.



Our "Pets With a Purpose" program provide frequent four-legged visitors.

"Their conversations were limited since it was just the two of them left to their own devices," Joyce says. The husband began to lose his ability to initiate or carry conversations, a common occurrence when the elderly become isolated. He eventually joined the Adult Day Program and as he interacted with members, his vocabulary increased.

"His ability to communicate with his wife improved; they actually had things to talk about!" Joyce exclaims. "Initially, his wife would phone us often, wondering how he was doing." Joyce encouraged her to follow in her husband's footsteps and find something she wanted to do for herself, leading her to find work in the community that she enjoyed. "Bringing a quality of life to the caregiver as well as the care receiver is a means of validation for us that this program is working," Joyce says.



Enjoying the gardens during our Minnehaha Falls outing.

A part of the whole-person approach promoted by the Adult Day Program is in the way the program caters to every individual. Staying true to Catholic Eldercare's commitment to person-centered care, the monthly calendar of activities is structured around specific members who co-lead the group on specific days, sharing the things that bring them joy or happiness.

"Tom will read his poems aloud and by the end of the hour, the impact of his words will have us all sitting on the edge of our chairs," Joyce says with a smile. "Then there's Jim, who leads photography groups and brings his pictures to life for the rest of us."

There's history buffs, world travelers—even a member who specializes in the Farmer's Almanac!—who have opportunities to share their unique stories and facilitate great conversation among the group. "It's a person-to-person program with an interests-based focus," Joyce affirms.

The creative arts and sensory activities offered by the program are the seeds that produce and nurture the relationships among the members.

"Music, for example, is the common thread that brings the group together because it provides a path for

reminiscence," Joyce says. "We've learned that people in their 50s reminisce no differently than those in their late 90s." Full-time music therapist Anna uses a variety of music experiences to initiate responses.

"Someone with dementia may not be able to place their daughter's name, but they can recall words from a song," Joyce explains. "And that gives the listener a sense of purpose and accomplishment." On any given day, music facilitates moments of togetherness, relaxation and overall socialization. Whether it's through singing or playing instruments together, everyone is working collaboratively to produce an end-product.

But the impact of music therapy does more than release a tripwire of powerful memories. "One day, Anna sat down with a nonverbal gentleman and instructed him to squeeze her hand when he heard a song he liked," Joyce shares. "One of those songs was by Aerosmith, and he immediately proceeded to squeeze her hand. Now she knows what kind of music he likes!" The gentleman started the day in a rigid, tightly-bound position and ended the music therapy session sitting back, chest fully open and relaxed in his chair. "When he first came to the program, he had limited physical contact ... now he communicates with hand squeezes and hugs the staff." Another testament to the transformation this program brings.

"I have experienced the joy, frustration and exhaustion in caring for an aging family member," Joyce adds. "I have so much respect for the caregivers out there whose sole goal is to care for their loved one the best they can.

"That's where my heart is when it comes to this program: to serve as a tool for the caregivers and provide them with the comfort in knowing that their loved one is safe, respected, and loved."

"The Catholic Eldercare by Day program has been a lifesaver for our family. Before finding the Adult Day Program, Dad was alone at home during the day, and often not motivated to eat or be active. Now Dad goes to the Adult Day Program five days a week, and loves the routine and special activities that are planned daily. The staff members are enthusiastic, love working with their participants and they all seem to have a lot of fun. Dad is more alert and energetic these days, and that is saying a lot for a 92-year-old!"

— Sheri K.



# Make a Difference, Donate Online!

Visit [www.catholiceldercare.org](http://www.catholiceldercare.org). It's secure, quick and meaningful.

## GENEROUS GIVING

Thank you! Your financial gifts support the engaging programs and activities residents enjoy and help offset the funding gaps in care costs.

During the fiscal year of October 1, 2014 to September 30, 2015, individuals, businesses and foundations donated approximately \$677,400.

## YOUR ANNUAL FUND GIFTS:

- make possible a Pastoral Care Program that helps enrich the lives of seniors through worship, prayer and the discovery of new creative gifts.
- ensure a strong Volunteer Program that brings neighbors and residents together in friendship and engaging activities.
- support the Adult Day Program which eases isolation and keeps seniors involved, active and independent.
- support staff improvement and mentoring programs which enhance the relationship with the residents.
- support the Subsidy Fund for seniors whose financial resources may be depleted.

## CAPITAL FUND:

- supports capital needs.



# Honor a Loved One With a Tribute Gift

A tribute gift is a great way to honor someone important to you and support the Catholic Eldercare mission. Your gift lets everyone know that a loved one or friend has been an important part of your life.

## A TRIBUTE GIFT CAN:

- honor a parent or grandparent on Mother's Day, Father's Day or other holidays;
- commemorate a special occasion such as a birthday, wedding, anniversary, graduation, recital or other memorable moments;
- recognize the military service of a veteran;
- and, honor a beloved staff member or volunteer.

For more information, visit [www.catholiceldercare.org](http://www.catholiceldercare.org) and click on **Giving**

## QUICK CLICK TO GIVE

By visiting [www.catholiceldercare.org](http://www.catholiceldercare.org), you can quickly access comprehensive information on the various ways to support the mission.

1. Go to [www.catholiceldercare.org](http://www.catholiceldercare.org)
2. Click on "Giving."
3. Select from a comprehensive list of resources from online annual fund giving to planned giving options.



# Your gift means so much.

Catholic Eldercare would like to extend a heartfelt thank you to the many wonderful individuals, corporations, foundations and associations for their generous support of our mission. Every dollar makes a significant difference in our ability to continue to deliver excellent care in a loving and beautiful environment designed for the growing and changing needs of our current and future residents. Without their support, we would not be able to run our programs that benefit the lives of many seniors.

These gifts were provided from October 1, 2015 through March 30, 2016. Every effort is made to ensure accuracy. If you see an error or omission, please contact the Office of Development at 612-362-2430. For a comprehensive list of all 2014-2015 donors, please visit: [catholiceldercare.org](http://catholiceldercare.org).



## ANNUAL FUND

Joanne and Duane Anders  
Denise Andersen  
Thomas R. Anderson and Mary Jo Rolek  
Anonymous (1)  
Bandana Chiropractic & Wellness Center  
John and Patricia Belian  
Billman-Hunt Funeral Chapel, Inc.  
Anne Marie Binczik  
Helen Boggs  
Books Are Fun  
Deborah and Brian Brattlof  
Doris Buhl  
Karen and Richard Carney  
Kathleen Cervenka  
Charity, Inc.  
Veronica Commers  
Bonnie Conroy  
Andrea and Richard Cottrell  
Alex and Kathleen Dehmer  
Michael Derus  
Diane and Peter Donnino  
Annella Z. Dosdall

Rosemary and Dennis Drevniak  
John D. Dunn M.D., J.D.  
Elizabeth C. Quinlan Foundation, Inc.  
Exchange Club of East Minneapolis  
Carol Ferguson  
FIL Minnesota Seniors  
Dan and Carol Forby  
Danell Garber and Ron Redding  
Kenneth and Marion Geason  
Tom and Margaret Gilson  
Greater Twin Cities United Way  
William S. and Marilyn J. Halloran  
Dr. Anna T. Hampel  
Robert Hanlon  
Mick Hawton  
Earl and Eileen Herzog  
Susan Hill  
Diane and Tony Hofstede  
John and Sally Hovanec  
Douglas and Sharon Jakacki  
Phillip Jares and Mark Hager  
Sue and Mark Jares

Tony and Betsy Jaros, Jr.  
Rev. Paul Jaroszeski  
Jimmy's Bar and Lounge  
Daniel and Dianne Johnson  
Lynne Johnston  
Phyllis Kahn  
Kapala-Glodek Funeral Home  
James and Joellen Kaster  
Gloria Katzmark  
Ruth Kildow  
Lynn J. Kjorstad  
Mary Louise Klas  
Carol L. Korogi-Reeves  
Patricia Lach  
Ladies Ancient Order of Hibernians, Hennepin Cnty Division 9  
Jeannine Lee  
Anna Margaret Leitschuh-Hansen  
David and Michaeline Loomis  
Cecelia A. Marrin  
Jan McGlennon  
Helen McNulty  
Medtronic Foundation  
Mercy Missionaries  
Marcus and Constance Merz

Ronald and Janice Michalov  
Joseph Mullery  
Sigrid Nelson  
Network For Good  
Laurence J. Niederhofer  
Michael O'Donnell  
Mitch Osterholt  
Mary Claire Owen  
Annette Pantel  
Andrew S. Pappas  
John Pepera  
Joseph T. Pfeifer  
James and Nancy Pirkle  
Lawrence and Judith Pohlen  
Darla Pulles  
Kathleen M. Ratican  
Donald and Jean Regan  
Alfred and Billie Reger  
Roberts Funeral Home, INC  
Fred and Dorothy Rodie  
Elizabeth Rouleau  
Gladys Ryle  
Schaaf Floral, Inc.  
Bonnie Schram  
Molly Schreiner  
Charles and Yvonne Selcer

Joseph T. Siwek  
Siwek Lumber and Millwork, Inc.  
Anne Smith  
Kristine Smyth  
Peter and Barbara Smyth  
Suzanne J. Snyder  
Bob and Patti Spinner  
Greg and Bonnie Stasik  
Anne M. Steiner  
Mark and Lynette Stenglein  
Ralph and Grace Strangis  
Joseph D. and Pamela Trongard Strauss  
Tamara Sullivan  
The Benevity Community Impact Fund  
The K Foundation  
Jean Thies  
Thomson Reuters  
Don and Dee Traxler  
Truist  
Robert Tryon

Robert and Jeanne Tupa  
UBS Financial Services  
United Way of Metropolitan Chicago  
Lores Vlaminc  
Judy Voss  
Donna M. Walicki Estate  
Frances Weber  
Wells Fargo Community Support Campaign  
Joe and Char Wentzell  
Jack and Jane Whiteford  
Debbie and Paul Woodward  
Robert Wrubel  
Michael and Deborah Young

## IN HONOR ANNUAL FUND

**24/7 Skilled Care Staff**  
Bernard Jacob  
**The Blessed Mothers**  
Helen Boggs  
**Day Program and Staff**  
Bernard Jacob  
**Margaret Getty**  
Bonita and Richard Foley  
**Rullie Guerrero**  
Catherine Bishop

**Antionette Hunstiger**  
Harriet Hunstiger Campbell  
**Elyzabeth, William and Andrew Karkoc**  
Olia Heinecke  
**Don Loizeaux**  
Jim Loizeaux  
**Louis Marino**  
John Karas  
**Boni Mastrian**  
Gerald and Kathleen Ludke  
**Nursing Staff at RVE**  
John E. Fox  
**Police and Firefighters**  
Michele Mary Boedigheimer  
**RiverVillage East**  
Catherine Bishop  
**David and Phyllis Robinson**  
The Children of David and Phyllis Robinson  
Peter Ronza

## IN MEMORY ANNUAL FUND

**James F. Abicht**  
Ron Abicht  
**David Anderson**  
James Anderson  
Dr. Wallace and Carolyn Christenson  
Mark Holmes  
Vernon and Mary Jaszewski  
Michael Jindra  
Thomas and Ann Keating  
Sharon Meemken  
Elizabeth Meylor  
Mark and Sherrill Nelson  
Leslie Torxel and Christie Falck  
Jack and Deanna Toumie  
James and Rosemary Walsh  
**Theodore Anderson, JR.**  
Cynthia J. Spiczka  
**William Archambault**  
LeRoy and Cecilia Piché  
**William Becker**  
Susan Becker  
Buena Vista Elementary School  
Joseph Cavaleri  
Diane Murphy  
**John Benson**  
Mark and Barbara Durenberger  
**John F. Bertossi**  
Patricia B. Dufort  
**Caroline Birk**  
Clarence J. Birk

**Mary Alice Blais**  
Barbara Gacek  
**Alf Boe**  
Darlene D. Olson  
**Helen Boe**  
Darlene D. Olson  
**Josephine Brama**  
Joan Crawford-Dietsch  
**Lucille Breyen**  
Sharron Feichtinger  
**Teresa Bruneau**  
William J. Bruneau  
**Margaret Buch**  
Kathy Callaghan  
William and Jeanette Varhol  
Washburn-McReavy Funeral Chapels  
**Irene Budde**  
Leroy Budde  
**Arthur Campbell**  
Janet M. Campbell  
**Victoria Carter**  
Maribeth Baldinelli  
Daniel G. Carter  
**Helen Casey**  
William R. and Eleanore V. Pederson

**Patricia Ann Cavaleri**  
Joseph Cavaleri  
**Susan Celusknak**  
John and Rosalie Halling  
**Joseph Clarence**  
Virginia Bennett  
**Rose Claesgens**  
Raymond Claesgens  
**Richard Cody**  
Karen Baker  
**Brother Michael Collins F.S.C**  
Michael L. Anderson  
**John Commers**  
Sigrid Nelson  
**Rose Corrick**  
Jim and Pat Hinton  
**Kenny Corsaw**  
Terry and Eugene Fink  
**Gloria Coughlin**  
Geraldine Burke and Claire McLorie  
Jan and Tom Chlebeck  
Dennis and Susan Cota  
Claudine Coughlin  
Michael and Holly Dovich  
Jane Hille  
Dirk and Cynthia Mayne  
Beverly Moen  
Beverly Newman  
Randal and Lisa Prowizor  
Henry and Evelyn Risius

Peter Siwert and Nancy Rogness  
Nicholas and Megan Schroeder  
Phillip and Leann Snyder  
Robert and MaryAnne Sobiech  
Sue Sobiech  
Robert and Ann Wattson  
George and Vivien Williams  
David Zemke  
Kristopher and Ellen Ziegler  
**Fred Cussler**  
John E. Toohey  
**Margaret Dady**  
Barbara Baden  
Thomas and Rita Bennett  
SallyJo Dady  
Therese and John Fabian  
Sharon Gageby  
Scott and Eileen Gagnon  
Joseph Gasik  
Janice M. Godlewski  
Burton and Doris Grimes  
Patricia B. Hillmeyer  
Keith Isaacson  
James and Joan Jacques  
James Murzyn  
Genevieve Peltier  
James and Delores Peltier  
Jeanne Peltier  
Gordon and Margaret Schmidt  
Hugh and Rosemary Shaw  
Greg and Bonnie Stasik  
John and Jacqueline Walther  
Jack Wheat  
Terrell and Marjorie Whitehill  
Michael and Marilyn Zandlo  
**June Dahlin**  
Jon and Nancy Dahlin  
**Lucille Duffney**  
David and Mary Jo Eidenschink  
Thomas and Amy Eidenschink  
Aaron and Jane Flatgard  
Dennis and Debra Kudak  
**Gerald Durand**  
Joseph Cavaleri  
Washburn-McReavy Funeral Chapels  
**Isabelle Durenberger**  
Mark and Barbara Durenberger  
**Alice and Frank Dziedzic**  
Terry and Mike Giel  
**Georgia Engen**  
David and Nancy Hoffmann

**Laura Erickson**  
Karen and Richard Carney

**Charlette Ferraro**  
Joanne L. Ferraro

**Gladys Fisher**  
Joseph and Marilyn Rauch

**Miriam Foltynski**  
Sandy Schnabel

**Lucile Forby**  
Dan and Carol Forby

**Mary Forsmark**  
Linda and David Olson

**Patricia Gagnon**  
Washburn-McReavy  
Funeral Chapels

**Gazda Family**  
Kenneth Gazda

**Mary Gillespie**  
David and Catherine Dooley

**Doris Grant**  
Sandra Murphy

**Betty Grauel**  
Mary Johnson  
Fred and Virginia McCabe  
George and Eileen Wolfram

**Father Ted Guminga**  
Patricia M. Klapak

**Judith Gusak**  
Susan Hill

**Frances Halling**  
John and Rosalie Halling

**Virginia Hamilton**  
Roger and Sheri Kress

**Robert Hannah**  
The Hannah Family

**Bernadette Heider**  
Sam and Barbara Clark  
Philip and June Riley

**Genevieve Heie**  
Thomas Heie

**Helen Higgins**  
Cornelia Gastner  
Terry and Janis Kachigan  
Don and Mary Loizeaux  
Katie McCormack  
Joseph and Julie Samolyk  
Marie M. Sawochka  
Washburn-McReavy  
Funeral Chapels  
Woodfield Distribution

**Helen and Howard Hinton**  
James and Patricia Hinton

**Katie Houlihan**  
Scott and Therese Campbell

**Beulah Hreha**  
David and Margie Hreha

**Mary Humnick**  
Cynthia Theis

**Eugene Hunstiger**  
Harriet Hunstiger Campbell

**Cecilia Indrehus**  
Jim and Ann Marie Zellmer

**Rosamond Jacob**  
Bernard Jacob  
Richard Auld and  
Paula Morphew

**James Jarosak**  
William and Jeanette Varhol

**Marien Jasinski**  
Kathryn Mullally

**Ricardo Arcesio Jimenez**  
Edilma Jimenez

**June A. Johnson**  
Mark R. Johnson

**Russell L. Johnson**  
Mark R. Johnson

**Nadia Karkoc**  
Gary and Orysia Bobcek

**Derek Klaus**  
Ronald and Mary Schuster

**Ludwig Knutson**  
Kenneth and Anne Knutson

**Kari Anne Koch**  
Jax Cafe

**Constance M. Koteles**  
Joe Koteles

**Virgina Koziol**  
Edith Adams  
Douglas Berg  
Edward and  
Mary Jane Caputa  
Rosemary Franzese  
Rex and Mary Jo Friesleben  
Diane Gilbertson  
Dennis Gritti  
James and Lois Herringston  
Allen and  
Barbara Hofmeister  
Gaylin and Diane Larson  
Trisha Legios  
Anna Margaret  
Leitschuh-Hansen  
James Marino and  
Robbie Keller  
Paul D. Miterko  
Larry and Roberta Nybeck  
K. A. Ohnstad  
Leonard Ohnstad  
Dorothy O'Reilly  
Alexander and  
Valentina Poletz  
Donald and Arla Rost  
G. S. Satersmoen-Engelhard  
Marie M. Sawochka  
Chadwick and  
Gina Schumacher  
Mary Ann Wiener  
Robert Wrubel  
Craig and Angela Zellner

**Jean L. Krause**  
Tim and Cheryl Krause

**Katie Lahey**  
Harold and Ione Swanson

**Ronald Laliberte**  
Dorothy Laliberte

**Margaret Laurent**  
David and Mardell Bevacqua  
John and Mary Boege  
Jan and Tom Chlebeck  
Gregory and  
Roberta Clausen  
Skaidrite Dombrovskis  
Richard and  
Margaret Dudek  
Dan and Carol Forby  
Julie Hautman  
Terence and Camilla Hughes  
Rev. Paul Jaroszeski  
Leland and Marilyn Meyer  
Lowell I. Stafford  
Jeff and Jodi Vohnoutka

**Gen Letness**  
Tom Letness

**George Loahr**  
Mark Loahr

**Mary Loberg**  
Leo and Betty Loberg

**Don Loizeaux**  
Rosemary Albrecht  
Pauline Altermatt  
Rebecca Campbell  
Joseph Cavaleri  
Mary Griffin  
Nickolas and Natalie Hall  
Daniel and Patricia Johnson  
R. and M. Leonard  
Mary Loizeaux  
Marlene Longpre  
Edward and Julie Niebur  
Raymond and  
Lorraine Owen  
Daniel Peterson  
Dudley Ryan  
Joe and Aggie Shields  
Donald and Mary Tehven  
Shirley Vandehey  
Carol Zerwas

**Mr. and Mrs. E. Malicki**  
Irene E. Smith

**Marilyn Malone Castonguay**  
Dan and Carol Forby

**Eric Martinez**  
Judy and John Benkufsky

**Bernadine Marx**  
John and Susan Derus  
Richard and Helen Steffens

**Mary Maslowski**  
Frank and Dolores Genosky

**Agnes McCormack**  
Eileen C. McCormack

**Joyce McIntosh**  
Keith and Dee Ann Grove  
Doug and Joyce McIntosh

**Lyle McMurchie**  
Richard and  
Shirley Johannsen  
Alan and Kelley McMurchie  
Rose McMurchie  
Mary Lou Rauchwarter  
William and Cheryl Vogel  
Lee Wagner and  
Lisa Krantz Wagner

**Lorraine McSween**  
John and Susan Derus

**Ernest Melwski**  
Walt and Pat Dziedzic

**Stanley and Genevieve Mirocha**  
Dan and Carol Forby

**Vera Moriarty**  
Mary and  
Michael McDermott

**Joseph Murzyn**  
James Murzyn

**Stanley Murzyn**  
James Murzyn

**My Son**  
Helen Boggs

**Dominic Nalezny**  
John and Sue Rau

**Irene Nalezny**  
John and Sue Rau

**Johanna Niziol**  
John and Sandra Dimond

**Ann B. Nolan**  
Bruce Nolan

**Jerry Olson**  
Darlene D. Olson

**Todd Olson**  
Darlene D. Olson

**Our Parents**  
Jerome and Rita Ryan

**Bernice Pederson**  
Corey Dahlstrand

**Margaret Petersen**  
Thomas and  
Kathleen Anderson  
Anonymous  
Karen Corbid  
Kari Dziedzic  
Walt and Pat Dziedzic  
J. Timothy and Judy Kelly  
Patricia and William Kelly  
Randi and Jim Mason  
Patricia McCauley  
Kathleen O'Brien and  
Jeffrey H. Loesch  
John and Kelly Roche  
Peter Roos

Susan Smedberg  
Wallace and Diane Stommes  
David M. Thompson and  
Ann Eilbracht Thompson

**Mr. and Mrs. Joseph A. Potter**  
John W. Keays and  
Patricia Potter-Keays

**John Rau**  
John and Sue Rau

**Adel Raycroft**  
Ronald and  
Laurie Anderson  
Timothy and Ann Kelly  
Thomas and Laurie Malone  
Minneapolis Clinic  
of Neurology

**Robert Roff**  
James Carroll

**Sister Ruth Roland, OP**  
Ann Marie Palmisano  
Clayton and Mavis Strandlie

**John and Helen Russinik**  
Dorothy A. Breza

**Bogdan Rutkiewicz**  
Carol Rutkiewicz

**Christine Rutkiewicz**  
Carol Rutkiewicz

**Donald Rzeszutek**  
Rosemary Rzeszutek

**Andy Salwei**  
Tom and Arlene Madden

**Dorothy Salwei**  
Tom and Arlene Madden

**Mama Schilling**  
Scott and Therese Campbell

**Tom Schuster**  
Ronald and Mary Schuster

**Lucille Sharkey**  
Mary Sharkey

**Carol Sieracki**  
Joseph Cavaleri  
Linda Pellowski  
Deborah Price  
Robert and Sharon Sieracki  
E. and M. Sorenson  
Barbara Speck  
Niels and  
Lorinda Wartenberg

**Irene Sieracki**  
Deborah Price

**Elizabeth Sly**  
Joseph Cavaleri  
Richard and  
Margaret Dudek

**Stella Smetka**  
Judith Smetka Pettit

**Jerry Smith**  
Irene E. Smith

**Colleen Smyth**  
Donald and Mary Fernholz  
Diane Lucas  
Marilyn Neumann  
Sandi Westberg

**Mary Soltys**  
Kevin and Joanne Carr

**Marie Sondag**  
Lorraine M. Dawning

**Genevieve Sporny**  
Marlys Sporny

**Catherine Stafford**  
Ronald and Mary Schuster

**Jan Stanek**  
Joseph Stanek

**Clara Steffens**  
John and Susan Derus

**Joe and Clara Steffens**  
Richard and Helen Steffens

**Donna Stelmaszewski**  
Catholic Eldercare  
Volunteer Dept.  
Henry and Jean Czupryna

**Doryce Surma**  
Billman-Hunt  
Funeral Chapel

**Irene Swanson**  
Harold and Ione Swanson

**Deloris Sydlowski**  
John and Susan Derus  
Richard and Helen Steffens

**Peter and Wanda Tobias**  
Thomas and Candice Tobias

**Evelyn Turgeon**  
Jean P. Turgeon  
Richard and  
Sharon Turgeon

**Virginia Marie Libby Pfeifer**  
Virginia Bennett

**Donna Walicki**  
Marge Buszta

**Marcella Walsh**  
Walt and Pat Dziedzic

**Margaret Wenner**  
Don and Mary Loizeaux

**John "Whitey" Westlund**  
Dan and Carol Forby

**Joan Wetoska**  
John and Margaret Combs  
Thomas and Lillian Gomilak  
F. Michael and  
Susan McGoldrick  
Francis and  
Ginny McGoldrick  
Ann Rasmusson  
Joann Tousignant

**Bertha Williams**  
Susan and Tom McGuire

**John Williams**  
Kristine Smyth

## CHAPEL

Anonymous  
Rosemary Bedor  
Michael and Monica Bianchi  
Joe and Sheila Biernat  
Sharon Bittick  
Marie Bliss  
Bernadette Botoshe  
James and Cheryl Brandes  
Rev. John F. Brandes  
Steve Brandes  
James and Pat Bumgarner  
Darlene Buschette  
Peter Cafferty  
Joseph Cavaleri  
Rachel Chin Fu Chen  
Rosemarie Clark  
Steve Cosgrove  
Ray and Donna Czupta  
Rosemary and  
Dennis Drevniak  
Joan Dudek  
Thomas Dunnwald  
Karen Erickson  
Virginia Evans  
Dan and Carol Forby  
Dante and Maria Gabriel  
Laurie Garcia  
Michael and Coleen Gillen  
Mary Ann Gillespie  
David and Katherine Gooley  
Guadalupe and Wayne Gysland  
Olive Hachlowski  
Theresa Hansen  
Bill and Kathy Hanson  
Kathleen Healy  
Richard and  
Miriam Heggerston  
Linda and Dale Herron  
Hunstiger Family Trust  
Mark and Rebecca Jagiela  
Lynne Johnston  
Patrick Jones  
Ena Joseph and Paul Wood  
Laverne Kallunki  
Ashlea Karkula  
Kathy and Ashley Karkula  
James Kellen  
Joyce A. Knutson  
Edward and Janice Kodet  
Anthony and  
Thushanthi Kozlak

Richard and Lorraine Kuklock  
Ladies Ancient Order of  
Hibernians, Hennepin  
Cnty Division 9  
Dave and Janis Langsdale  
Ann Higgins and Randall Last  
Mark and Connie Lewis  
George W. Loahr  
Don and Mary Loizeaux  
Maria Victoria Magsalin  
G. Ratna and  
Bernadette Mallawaaratchy  
Richard Mandile  
Mary Martichuski  
Victoria R. Matthes  
Jerome and Pauline McAllister  
Geraldine C. McCollow  
Elizabeth McDonnell  
Rose McMurchie  
Michael Natysin  
Ramona Neeb  
Lillian Nelson  
Margaret O'Leary  
Henry Pachi  
Diane Parkin  
Dennis and Kathleen Peterson  
Joanne Rabatin  
James and Carolyn Rains  
Kathleen M. Ratican  
Anne Reuter  
Donald Richter and  
MaryAnn L. Peffer  
Cynthia Richter  
Doris Roth  
Jim Roth  
David F. Ryan  
Rosemary Rzeszutek  
Barbara Salem  
Marie M. Sawochka  
Lois Schardin  
Richard D. Shupien  
Mark and Lori Standing  
Ellen Stein  
Tom and Patty Stuart  
Paul Trepanier  
Robert and Jeanne Tupa  
Mark and Beth Weinberger  
Lorraine and  
Joseph Weinmeyer  
Teresa and Robert White  
Dennis Wrzos  
Donald and Lydia Zappa  
Antoinette M. Zwolski



# Leave a legacy



**Donna Walicki was living proof that our roots run deep and personal,** as shared

by her sister-in-law Nancy Walicki. Born and raised in Northeast Minneapolis, Donna was deeply entrenched in

the community and made life-long relationships with those around her. She attended Edison High School which ignited her love for arts and culture that lasted a lifetime: ceramics, travel and photography, to name a few.

Donna was eager to share her talents and interests with others after she retired from her bookkeeping job at Bunge Corporation in 1987. "Volunteering became a way of life for Donna," said Nancy. "She donated her time at All Saints Catholic Church and became a regular volunteer for Catholic Eldercare." At Catholic Eldercare, she led the decorations

for festivals and events, created centerpieces for holiday dinners and made paper boutonnieres and corsages that the residents loved and treasured.

But Donna's generosity didn't end with her time and talents. In her usual selfless manner, she bequeathed Catholic Eldercare a five-figure sum in her will, leaving behind a legacy that will forever remain in the hearts of those at Catholic Eldercare. "It was Donna's plan to stay at Catholic Eldercare once the time came for her to receive full-time care," said Nancy.

Donna had an apartment picked out and furniture ordered, but unfortunately her health declined the day before her move-in.

"She gave so much to Catholic Eldercare through her artistic expression and her gift for bringing people together," said Nancy. "But she would be the first one to say that it was Catholic Eldercare that gave so much to her."

## SISTER RUTH ROLAND SOCIETY

Ken Baltas and Dorothy Elion  
Alvina Bartylla<sup>†</sup>  
Mary Virginia Betlach  
Elizabeth Bonnes Estate<sup>†</sup>  
Lidwina Buchwald Estate<sup>†</sup>  
Donald G. Campagne Estate<sup>†</sup>  
John<sup>†</sup> and Veronica Commers  
Marion Critelli Estate<sup>†</sup>  
Lucille Damm Estate<sup>†</sup>  
Bernice C. Decowski Estate<sup>†</sup>  
Regina A Dinhoff Estate<sup>†</sup>  
Mae LaVonne Ecklund Estate<sup>†</sup>  
Ada B. Eller Estate<sup>†</sup>  
Dorothy Marie Flynn Estate<sup>†</sup>  
Thomas E. Gainor  
Loretta R. Gliniany<sup>†</sup>

Thomas F. Glodek  
Geraldine Grajeda Estate<sup>†</sup>  
Angeline F. Guminga Estate<sup>†</sup>  
Mable Halloran Estate<sup>†</sup>  
Barbara Hedges Estate<sup>†</sup>  
Rev. John M. Hofstede  
Mary D. Hungate<sup>†</sup>  
James E. Indrehus  
Doug J. Kohlan  
Shirley Korblick Estate<sup>†</sup>  
Margaret T. Manley Estate<sup>†</sup>  
Antonio Martinez Estate<sup>†</sup>  
John C. Matlon Estate<sup>†</sup>  
Thomas and Susan McGuire  
Barbara Mead<sup>†</sup>  
Agnes Mohr Estate<sup>†</sup>  
Margaret F. Mulcare Estate<sup>†</sup>  
Joan E. Murray  
Karlis Neimanis Estate<sup>†</sup>

James and Cheryle Nesser  
Bernard J. Newinski  
Bruce Nolan  
Mr. and Mrs. Richard Palen  
Anthony J. Pantano Estate<sup>†</sup>  
Mr. and Mrs. Ralph Clinton Peabody  
Adam and Virginia Piecek Estate<sup>†</sup>  
Leo E. Rainville Estate<sup>†</sup>  
Wallace Rainville Estate<sup>†</sup>  
Elizabeth A. Rouleau  
Margaretha F. Santha<sup>†</sup>  
Mary J. Schubert  
Margaret J. Schweizer Estate<sup>†</sup>  
Stuart S. Seim  
Luella L. Simon  
Dolores E. Sisson Estate<sup>†</sup>  
Kristine Smyth

Jack Spillane, Jr.  
Florence W. St. Claire Estate<sup>†</sup>  
Joseph and Pamela Strauss  
Charles E. Sullivan and Sandra West  
Dena Tarnowski Estate<sup>†</sup>  
Eugenia R. Taylor  
Donna Walicki Estate<sup>†</sup>  
Mr. and Mrs. John D. Whalen  
Alan Winters Estate<sup>†</sup>  
Stanley Wruck Estate<sup>†</sup>  
<sup>†</sup> Deceased



**WAYS TO GIVE:** To learn more about how you can support the work of Catholic Eldercare, contact Kristine A. Smyth at 612-362-2494 or ksmyth@catholiceldercare.org.

# Thank You

One of the greatest blessings at Catholic Eldercare is the sharing of time and talents by a loving team of volunteers. Each and every one of our volunteers is instrumental in maintaining our mission to provide the care, housing and services needed by older adults to continue living fully with dignity in an intentionally created caring community.



Celebrating at the Catholic Eldercare's Volunteer Luncheon.

## VOLUNTEERS

Mark Anton  
Carla Anton  
Sorcha Ashe  
Jean Askwith  
Amy Bakko  
Barbara Balfe  
Joyce Beaudry  
Stephen Becchetti  
Rosemary Bedor  
Dolores Bertram  
Kaitlin Bezdicek  
Lisa Bissen  
Sharon Bittick  
Sandy Boudewyns  
Frank Broderick  
Thomas Bruening  
Richard Brustad  
Jessica Buchholz  
Jean Byland  
James Carland  
Jeanne Carlson  
Roxana Chirinos  
Jan Chlebeck  
Thomas Chlebeck  
Patricia Connors  
Elizabeth Criswell  
Dianne Cummings  
Elizabeth Dickenson

Bonnie Donohue  
Judith Doze  
Jerry Duffney  
Connie Duffney  
Ann Dunn-Foley  
Thomas Dvorak  
Sally Edlund  
Jennifer Ennen  
Pamela Etienne-Planche  
Jerry Evans  
Carol Ferguson  
John Fischer  
Robert Fjerstad  
Carol Forby  
Daniel Forby  
Kenneth Fuchs  
Madison Gallagher  
Gladys Gay  
Laura Glass  
Shirley Graczyk  
Terri Grina  
Janet Grothjan  
Steven Grothjan  
Marian Hancharek  
Karen Hanson  
Ellen Hawley  
Jean Heath  
Arlaine Higgins

Gege Hodgson  
Rochelle Holmes  
Phyllis Hupp  
Tessa Ion  
Phillip Jares  
Kelsey Juenke  
Dianne Kaselnak  
Maddie Kehoe  
James Kellen  
Autumn Kern  
Joyce Knutson  
Lindsey Kobow  
Karen Kohl  
Jacob Koller  
Mary Gwendolin Koniar  
Jadwiga Koson  
Marjorie Kozachok  
Peter Krozser  
Sheila Lange  
Loretta Larkey  
Deanna Levenhagen  
Molly LeVoir  
Jeanne Lins  
Lucille Lins  
Aceilya Love  
Theresa Lund  
Judith Marget  
Victoria Matthes

Michael Maxey  
Michael McGrane  
Sarah McNally  
James McShane  
Carren Meitz  
Beverly Mertz  
Ann Moe  
Anda Moettus  
Michael Morgan  
James Murzyn  
Patricia Musenbrock  
Bernard Newinski  
Linh Nguyen  
Lorraine Nizioł  
Jeanene Noll  
Joann Olsen  
Peter Olson  
Sean O'Mara  
Andrew Pappas  
Carol Pawlicki  
Marilyn Presseller  
Bonnie Quimby  
Kathleen Ratican  
Anne Reuter  
Donald Richter  
David Robinson  
Phyllis Robinson  
Judith Roggon  
Sharon Roseth

Ann Saliars  
Lorna Schad  
Lois Schardin  
Fabian Seitz  
Mary Sherman  
Cleo Simonett  
Marsha Simon-Holt  
Kara Stave  
Marlene Steichen  
Jerome Sypnieski  
Jackie Sypnieski  
Victoria Szlag  
Marlene Tessier  
Victoria Thai  
Mary Thorpe-Mease  
Kimberly Trinh-Sy  
Jean Turgeon  
Beverly Urista  
Jonathan Voltz  
Marcie Walters  
Eleanor Warpeha  
Ann Williams  
Lauri Wollner  
Tina Wolters  
Richard Wright  
Bernadette Zadworny  
Regina Zandlo  
Bethany Zucco  
James Zucco



## Board of Directors

### OFFICERS

**Suzanne Snyder**  
Chair

**Dan Johnson**  
President & CEO

**Thomas M. Beck**  
Vice Chair

**Marcus Merz**  
Treasurer

**James J. Murzyn**  
Secretary

**Michael J. Shasky**  
Chief Financial Officer

### DIRECTORS

Kenneth G. Baltes  
Rev. John Bauer  
Richard Brustad  
Mark T. Glodek  
Robert J. Hanten  
Albert J. Hofstede, Jr.  
Rev. Glen Jenson  
Penelope A. Moyers  
Jeff Schrempp  
Robert K. Spinner  
Mark Stenglein  
Lores J. Vlaminck  
Beth A. Waterman

## The Catholic Eldercare Community

### CATHOLIC ELDERCARE BY DAY ADULT DAY CENTER

This program offers care and programming for the senior who may require modest assistance when a spouse or other loved ones are unavailable to attend to their needs. Adult Day also serves as a respite for family caregivers who may find it increasingly challenging to care for an older adult all the time. The weekday program is affordable and flexible. Clients may be eligible for financial assistance. Transportation can be arranged. Located at 817 Main Street, NE in Minneapolis. 612-362-2405



### RIVERVILLAGE EAST ASSISTED LIVING AND MEMORY CARE

### RIVERVILLAGE NORTH SUBSIDIZED LIVING

This inviting 107-unit senior campus, adjacent to St. Hedwig Church in Northeast Minneapolis, offers affordable market rate, assisted living apartments and memory care (East) and independent, subsidized units (North). Located at 2919 - 2921 Randolph Street, NE. 612-605-2500



### MAINSTREET LODGE ASSISTED LIVING

This assisted-living residence, located at 909 Main Street NE in Minneapolis, includes 51 comfortable apartments. The Lodge is adjacent to the nursing home and St. Anthony of Padua Chapel. 612-362-2450



### CATHOLIC ELDERCARE ON MAIN SKILLED NURSING

A 150-bed skilled nursing residence, with dedicated memory care floor. Located at 817 Main Street NE in Minneapolis, the nursing home is physically connected to St. Anthony of Padua Chapel for ease of worship and socialization opportunities. 612-379-1370



### TRANSITIONAL CARE UNIT REHABILITATION CARE

Opening October 2016. See page 4 for details. 612-379-1370

## Catholic Eldercare Community Foundation & Affiliates

CONSOLIDATED FINANCIAL INFORMATION FOR THE YEAR ENDED SEPTEMBER 30, 2015



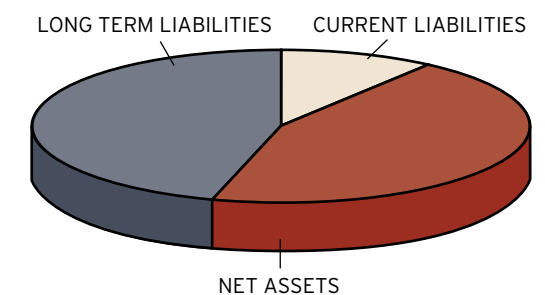
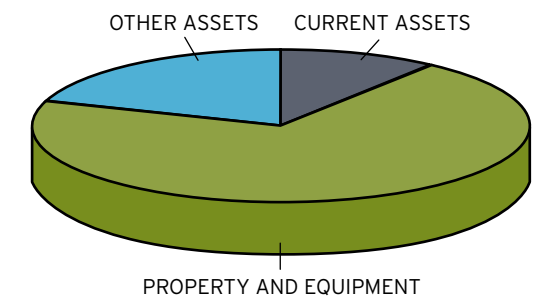
### Consolidated Balance Sheet:

#### ASSETS:

Current Assets	\$3,845,986
Property and Equipment, net	\$25,543,815
Other Assets	\$7,167,006
<b>Total Assets</b>	<b>\$36,556,807</b>

#### LIABILITIES AND NET ASSETS:

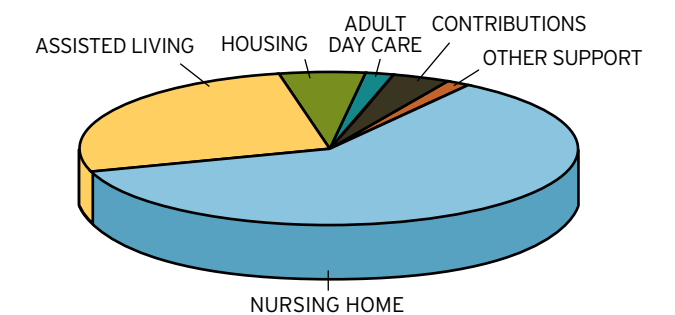
Current Liabilities	\$3,665,884
Long Term Liabilities	\$16,253,055
Net Assets	\$16,637,868
<b>Total Liabilities and Net Assets</b>	<b>\$36,556,807</b>



### Statement of Activities and Changes in Net Assets:

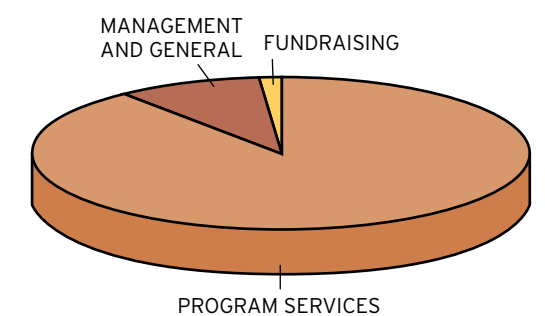
#### REVENUES AND OTHER SUPPORT

Nursing Home	\$11,587,508
Assisted Living and Home Care	\$5,089,243
Housing	\$1,048,463
Adult Day Care	\$376,537
Contributions	\$703,322
Other Support and Investment Income	\$288,797
<b>Total Revenues and Other Support</b>	<b>\$19,093,870</b>



#### EXPENSES

Program Services	\$16,375,402
Management and General	\$1,712,711
Fundraising	\$242,860
<b>Total Operating Expenses</b>	<b>\$18,330,973</b>



Excess (deficiency) of revenues over expenses \$762,897

Change in net unrealized gains on investments (\$393,735)

**Change in Net Assets \$369,162**



817 Main Street N.E.  
Minneapolis, MN 55413

[www.catholiceldercare.org](http://www.catholiceldercare.org)

Non-Profit  
Organization  
U.S. POSTAGE  
**PAID**  
Twin Cities, MN  
Permit No. 2638

## Upcoming Events

**September 22**

**Unlocking the Power of Community**

Earle Brown Heritage Center, Brooklyn Center

**October 2016**

**Transitional Care Unit Grand Opening**

149 8th Avenue NE, Minneapolis

For the latest upcoming events,  
please visit [www.catholiceldercare.org](http://www.catholiceldercare.org)



**Join a team of compassionate, caring and dedicated individuals at Catholic Eldercare.**

Discover the fulfillment that comes from providing an unmatched level of person-centered care our residents and families have come to know and love. We invite you to explore our career opportunities and see why Catholic Eldercare has offered the finest in senior services for over 30 years. Visit [www.catholiceldercare.org/employment](http://www.catholiceldercare.org/employment) for more information, or contact Human Resources Manager Jennifer Vaske at 612-362-2491.